

# **Sistema Pressfitting**

**inoxPRES**® HT FREE SILICONE

Pressfitting system  
**silicone free**

Système de pressfitting  
**sans silicone**

Pressfitting-System  
**silikonfrei**

Sistema Pressfitting  
**sin silicona**

## **Listino luglio 2022**

July 2022 price list  
Preisliste Juli 2022  
Tarif juillet 2022  
Lista julio 2022

**O-Ring FKM green**



**ROM**  
RACCORDERIE METALLICHE



## Campi di applicazione / Fields of application

inoxPRES<sup>®</sup> HT FREE SILICONE



Aria compressa  
Compressed air



Ossigeno industriale O<sub>2</sub>  
Industrial oxygen O<sub>2</sub>



Ozono O<sub>3</sub>  
Ozone O<sub>3</sub>



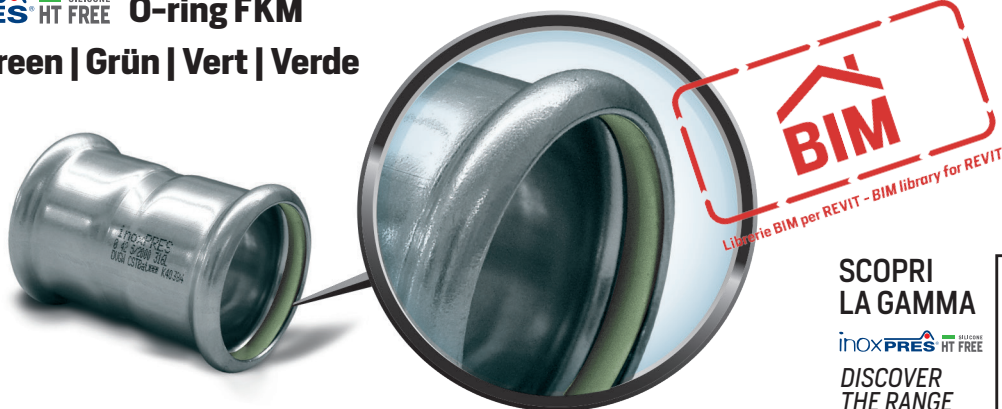
Solare termico  
Thermal solar



Olio / gasolio  
Oil / diesel fuel

inoxPRES<sup>®</sup> HT FREE SILICONE O-ring FKM

Verde | Green | Grün | Vert | Verde



SCOPRI  
LA GAMMA

inoxPRES<sup>®</sup> HT FREE SILICONE

DISCOVER  
THE RANGE



### Applicazioni industriali

- Aria compressa
- Ossigeno industriale O<sub>2</sub> (no alimentare/ospedaliero)
- Ozono O<sub>3</sub>
- Solare termico P max 6 bar; T max 220°C
- Olio / Gasolio

**Utilizzare solo tubazioni "ricotte".** Eventuali altre veicolazioni di fluidi particolari, devono essere valutate dall'ufficio tecnico di RM.

### O-ring FKM verde

### Industrial applications

- Compressed air
- Industrial Oxygen O<sub>2</sub> (no food/hospital)
- Ozone O<sub>3</sub>
- Thermal solar P max 6 bar; T max 220°C
- Oil/diesel fuel

**Only "annealed" pipes can be used.** Any other vehiculation of special fluids, must be evaluated from RM technical office.

### Green FKM O-Ring

FOCUS ON **SILICONE  
FREE**

IT

I componenti del sistema Inoxpres HT risultano sgrassati:

- in classe E sulla base del livello dei residui di sostanze volatili misurati in accordo allo standard ASTM F331-05;
- in classe D sulla base del livello dei residui di sostanze volatili misurati in accordo allo standard ASTM G 144-01;

[test report JOB ID 147 del 09/03/2017]

Gli o-ring FKM del sistema di raccordi a pressare:

- sono stati testati con Spettrofotometria ad infrarosso (FT-IR): non si è rilevata presenza di silicone [test report RA160100 del 15/04/2016]

EN

The components of Inoxpres HT system are degreased:

- Class E on the basis of the level of residues of volatile substances measured in accordance with ASTM F331-05 standards;
- Class D on the basis of the volatile residues level measured in accordance with ASTM G 144-01 standards;

[Test reports JOB ID 147 - 09.03.2017]

The FKM O-rings of press fitting system:

- are tested with infrared spectrophotometry (FT-IR): It has not detected the presence of silicon [Test report RA160100 - 15.04.2016]

DE

Die Komponenten des Inoxpres HT Systems sind entfettet:

- Klasse E auf der Grundlage des Rückstands an flüchtigen Stoffen, gemessen nach ASTM F331-05-Standard;
- Klasse D auf der Basis des flüchtigen Rückstandsniveaus, gemessen nach ASTM G 144-01 Standard;

[Prüfberichte JOB ID 147 - 09.03.2017]

Die FKM O-Ringe für Pressfitting:

- werden mit Infrarotspektrophotometrie (FT-IR) getestet: Es wurde das Vorhandensein von Silikon nicht nachgewiesen [Prüfbericht RA160100 - 15.04.2016]

FR

Les composants du système Inoxpres HT sont dégraissés:

- Classe E sur la base du niveau des résidus de substances volatiles mesuré selon la norme ASTM F331-05;
- Classe D sur la base du niveau des résidus de substances volatiles mesuré selon la norme ASTM G 144-01;

[Rapports d'essai JOB ID 147 - 09/03/2017]

Les joints FKM des systèmes de raccords à sertir:

- sont testés avec spectrophotométrie infrarouge (FT-IR): Il n'a pas détecté la présence de silicone [Rapports d'essai RA160100 - 15.04.2016]

ES

Los componentes del sistema HT Inoxpres están desengrasados según:

- Clase E: La medida del nivel de residuos de sustancias volátiles conforme a la norma ASTM F331-05;
- Clase D: La medida del nivel de residuos de sustancias volátiles conforme a la norma ASTM G 144-01;

[Informes de prueba N.º de trabajo 147, 09/03/2017]

Las juntas tóricas FKM del sistema presado:

- Se han comprobado con una espectrofotometría infrarroja (FT-IR): No se ha detectado la presencia de silicona.

[Informes de prueba RA160100 de 15.04.2016]

**Gamma dimensionale / Product range**  $\varnothing 15 \div 54 \text{ mm}$   
**A richiesta / On demand**  $\varnothing 76,1 \div 108 \text{ mm}$

Altre figure possono essere fornite "a richiesta"  
 Other figures can be provided "on demand"  
 Andere Bilder kann "auf Anfrage" vorgesehen sein  
 D'autres figures peuvent être fournis "sur demande"  
 Otras figuras pueden ser proporcionadas "bajo demanda"



**116/300 6 m**


**B 30 31**

**TUBO PER IMPIANTI "SILICONE FREE"**

- PIPE FOR "SILICONE FREE" INSTALLATION
- ROHR FÜR "SILIKONFREIE" INSTALLATION
- TUBE POUR INSTALLATION "SANS SILICONE"
- TUBO PARA INSTALACIÓN "LIBRE DE SILICONA"

**NORM:** EN 10217-7 (DIN 17455) - EN 10312

**Mat. Nr.: 1.4404 (AISI 316L) L=6 m**  
**Ricotto - Annealed - Geglüht - Hypertrempé - Recocido**

CODE	Dimensions mm x mm	Ø int mm	L m	 kg/m	Volume l/m	Minimum package m	Bundle m	€/m
116015300	15 x 1,0	13	6	0,351	0,133	60	1014	23,27
116018300	18 x 1,0	16	6	0,426	0,201	60	1014	25,01
116022300	22 x 1,2	19,6	6	0,625	0,302	60	762	33,56
116028300	28 x 1,2	25,6	6	0,805	0,514	30	546	41,17
116035300	35 x 1,5	32	6	1,258	0,804	30	546	60,66
116042300	42 x 1,5	39	6	1,521	1,194	30	366	72,73
116054300	54 x 1,5	51	6	1,972	2,042	30	366	92,24

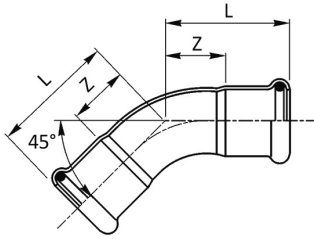
Per sistema silicone free, utilizzare solo tubo Inoxpres ricotto.

For silicone free system, only the annealed Inoxpres pipes must be used.

Für System freies Silikon, nur geglüht Inoxpres Rohre verwendet werden müssen.

Pour le système exempt de silicone, seuls les tuyaux hypertrempé Inoxpres doivent être utilisés.

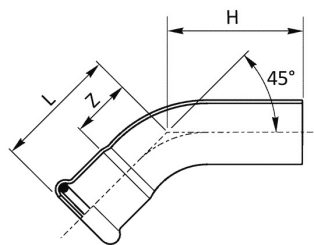
Para el sistema libre de silicona, se deben utilizar únicamente tuberías recocida Inoxpres.

**181/450 HT****CURVA 45° FF**

- 45° ELBOW FF
- BOGEN 45° II
- COUDE FF 45°
- CURVA 45° HH

**MATERIAL:** AISI 316L – 1.4404**O-RING:** FKM verde - green - Grün - vert - verde**TYPE:** esente silicone - silicon free  
Siliconfrei - sans silicone  
libre de silicona

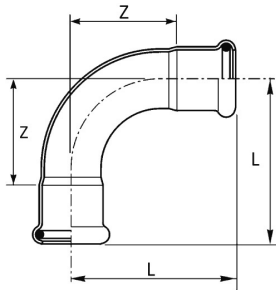
CODE	De mm	Radius	L mm	Z mm	g		€
181015450CHT	15	1,2 De	27,5	7,5	39	1	15,10
181018450CHT	18	1,2 De	29,5	9,5	48	1	16,70
181022450CHT	22	1,2 De	32	11	63	1	19,41
181028450CHT	28	1,2 De	37	14	90	1	23,33
181035450HT	35	1,2 De	43	17	127	1	27,60
181042450HT	42	1,2 De	51	21	177	1	44,70
181054450HT	54	1,2 De	62	30	273	1	57,37

**181/451 HT****CURVA 45° MF**

- 45° ELBOW MF
- BOGEN 45° IA
- COUDE MF 45°
- CURVA 45° HM

**MATERIAL:** AISI 316L – 1.4404**O-RING:** FKM verde - green - Grün - vert - verde**TYPE:** esente silicone - silicon free  
Siliconfrei - sans silicone  
libre de silicona

CODE	De mm	Radius	L mm	H mm	Z mm	g		€
181015451CHT	15	1,2 De	27,5	36	7,5	38	1	15,10
181018451CHT	18	1,2 De	29,5	38	9,5	47	1	16,15
181022451CHT	22	1,2 De	32	42	11	63	1	18,32
181028451CHT	28	1,2 De	37	46	14	90	1	21,79
181035451HT	35	1,2 De	43	57,5	17	132	1	25,69
181042451HT	42	1,2 De	51	72	21	196	1	43,07
181054451HT	54	1,2 De	62	82	26	296	1	55,17



## 181/900 HT

B 10 16

### CURVA 90° FF

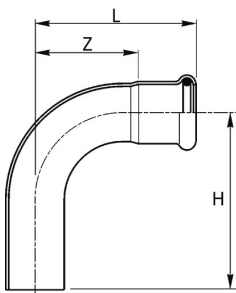
- 90° ELBOW FF
- BOGEN 90° II
- COUDE FF 90°
- CURVA 90° HH

**MATERIAL:** AISI 316L - 1.4404

**O-RING:** FKM verde - green - Grün - vert - verde

**TYPE:** esente silicone - silicon free  
Siliconfrei - sans silicone  
libre de silicona

CODE	De mm	Radius	L mm	Z mm	g	€
181015900CHT	15	1,2 De	38	18	46	11,52
181018900CHT	18	1,2 De	41,5	21,5	58	13,17
181022900CHT	22	1,2 De	47	26	78	15,90
181028900CHT	28	1,2 De	56	33	116	21,18
181035900HT	35	1,2 De	68	42	162	34,32
181042900HT	42	1,2 De	80	50	231	58,96
181054900HT	54	1,2 De	100	64	367	82,25



## 181/901 HT

B 10 16

### CURVA 90° MF

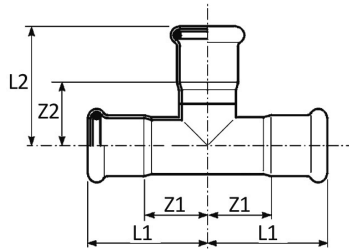
- 90° ELBOW MF
- BOGEN 90° IA
- COUDE MF 90°
- CURVA 90° HM

**MATERIAL:** AISI 316L - 1.4404

**O-RING:** FKM verde - green - Grün - vert - verde

**TYPE:** esente silicone - silicon free  
Siliconfrei - sans silicone  
libre de silicona

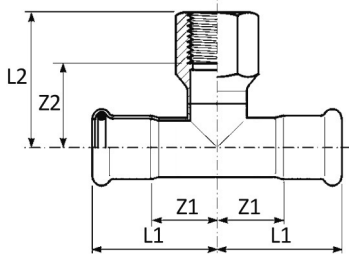
CODE	De mm	Radius	L mm	H mm	Z mm	g	€
181015901CHT	15	1,2 De	38	48	18	46	12,08
181018901CHT	18	1,2 De	41,5	48,5	21,5	56	13,73
181022901CHT	22	1,2 De	47	57	26	79	16,46
181028901CHT	28	1,2 De	56	64	33	115	20,65
181035901HT	35	1,2 De	68	82	42	176	31,44
181042901HT	42	1,2 De	80	101	50	253	57,08
181054901HT	54	1,2 De	100	120	64	390	82,72

**182 HT****“T”**

- EQUAL TEE
- T-STÜCK
- TÉ ÉGAL
- TE IGUAL HHH

**MATERIAL:** AISI 316L – 1.4404**O-RING:** FKM verde - green - Grün - vert - verde**TYPE:** esente silicone - silicon free  
Siliconfrei - sans silicone  
libre de silica

CODE	De mm	L1 mm	L2 mm	Z1 mm	Z2 mm	g	€
182015000HT	15	34	39	14	19	67	21,07
182018000HT	18	37	41	16	21	80	24,24
182022000HT	22	39	45	18	24	106	25,50
182028000HT	28	44	50	21	27	145	30,66
182035000HT	35	51	57	25	31	201	38,22
182042000HT	42	59	65	28	35	260	54,06
182054000HT	54	70	77	34	42	404	64,43

**189 HT****“T” CON DERIVAZIONE FILETTO F**

- BRANCH TEE FEMALE BSP OUTLET
- T-STÜCK MIT ABGANG IG
- TÉ MIXTE AVEC FILETAGE F
- TE HEMBRA ROSCADA

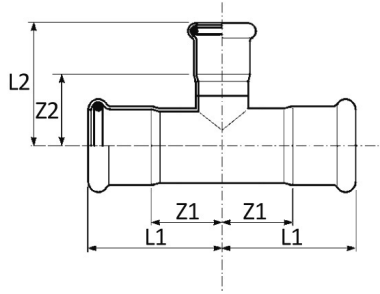
**MATERIAL:** AISI 316L – 1.4404**O-RING:** FKM verde - green - Grün - vert - verde**TYPE:** esente silicone - silicon free  
Siliconfrei - sans silicone  
libre de silica**THREAD:** EN 10226-1 (ex ISO 7/1)

CODE	De x Rp x De mm x inch x mm	L1 mm	L2 mm	Z1 mm	Z2 mm	g	€
189102015HT*	15 x 1/2" x 15	36,5	22,5	16,5	8,5	117	23,30
189102018HT*	18 x 1/2" x 18	36	24	16	10	128	23,92
189102022HT*	22 x 1/2" x 22	39	26	18	12	159	25,58
189304022HT*	22 x 3/4" x 22	41,5	30	20,5	14	184	29,19
189102028HT*	28 x 1/2" x 28	44	29	21	15	217	28,13
189304028HT*	28 x 3/4" x 28	44	30	21	14	221	33,43
189100035HT	35 x 1" x 35	51	47	22	28	250	65,33
189100042HT	42 x 1" x 42	59	60	29	41	346	71,58
189102054HT	54 x 1/2" x 54	70	61	34	46	337	49,43
189304054HT	54 x 3/4" x 54	70	64	34	48	391	53,56
189200054HT	54 x 2" x 54	70	81	34	55	838	107,68

[\*] senza saldatura - seamless - nahtlos - sans soudure - sin soldadura



B 10 16



## 192 HT

### “T” RIDOTTO

- REDUCING TEE
- T-STÜCK MIT REDUZIERTEM ABGANG
- TÉ RÉDUIT
- TE REDUCIDA HHH

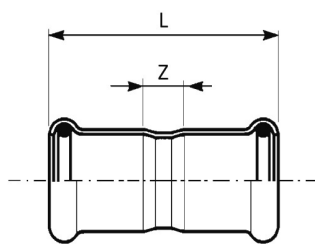
**MATERIAL:** AISI 316L - 1.4404

**O-RING:** FKM verde - green - Grün - vert - verde

**TYPE:** esente silicone - silicon free  
Siliconfrei - sans silicone  
libre de silicona

CODE	De mm	L1 mm	L2 mm	Z1 mm	Z2 mm	g	€
192018015HT	18 x 15 x 18	36,5	41	15,5	21	80	20,41
192022018HT	22 x 18 x 22	39	44	18	23	98	22,47
192028022HT	28 x 22 x 28	44	47	21	26	135	28,37
192035022HT	35 x 22 x 35	51	51	25	30	167	34,62
192035028HT	35 x 28 x 35	51	54	25	31	171	36,03
192042028HT	42 x 28 x 42	59	57	29	34	243	50,78
192042035HT	42 x 35 x 42	59	61	29	35	272	51,89
192054035HT	54 x 35 x 54	70	68	34	42	361	58,16
192054042HT	54 x 42 x 54	70	72	34	42	376	62,30

B 10 16



## 183/000 HT

### MANICOTTO

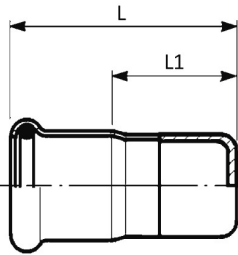
- COUPLING
- MUFFE
- MANCHON
- MANGUITO HH

**MATERIAL:** AISI 316L - 1.4404

**O-RING:** FKM verde - green - Grün - vert - verde

**TYPE:** esente silicone - silicon free  
Siliconfrei - sans silicone  
libre de silicona

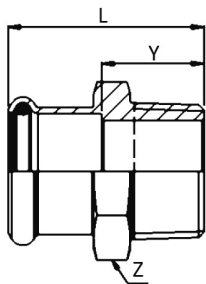
CODE	De mm	L mm	Z mm	g	€
183015000HT	15	49	9	35	8,10
183018000HT	18	50	10	42	9,24
183022000HT	22	53	11	54	10,63
183028000HT	28	56	10	71	12,17
183035000HT	35	63	10	97	15,38
183042000HT	42	72	12	136	20,85
183054000HT	54	83	13	198	25,29

**183/003 HT****B1016****TAPPO DI CHIUSURA**

- STOP END
- VERSCHLUSSKAPPE
- BOUCHON D'OBTURATION
- TAPÓN

**MATERIAL:** AISI 316L - 1.4404**O-RING:** FKM verde - green - Grün - vert - verde**TYPE:** esente silicone - silicon free  
Siliconfrei - sans silicone  
libre de silicona

CODE	De mm	L mm	L1 mm	g	€
183015003HT	15	44	24	32	11,44
183018003HT	18	44	24	38	11,92
183022003HT	22	45	24	51	13,84
183028003HT	28	48	25	68	19,05
183035003HT	35	52	26	95	21,73
183042003HT	42	56	26	126	33,36
183054003HT	54	62	27	185	39,35

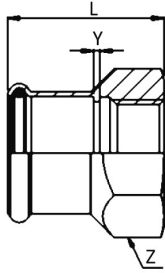
**187 HT****B1016****MANICOTTO MISTO FILETTO M**

- MALE ADAPTER
- ÜBERGANGSSTÜCK MIT AG
- RACCORD AVEC FILETAGE MALE
- UNIÓN MACHO

**MATERIAL:** AISI 316L - 1.4404**O-RING:** FKM verde - green - Grün - vert - verde**TYPE:** esente silicone - silicon free  
Siliconfrei - sans silicone  
libre de silicona**THREAD:** EN 10226-1 (ex ISO 7/1)

CODE	De x R mm x inch	L mm	Z mm	Y mm	g	€
187102015HT	15 x 1/2"	41	24	21	54	20,40
187102018HT	18 x 1/2"	41	27	21	58	22,21
187102022HT	22 x 1/2"	42	32	21	83	24,15
187304022HT	22 x 3/4"	44	32	23	89	25,02
187100022HT	22 x 1"	46	36	25	154	29,75
187304028HT	28 x 3/4"	47	38	24	114	33,91
187100028HT	28 x 1"	48	38	25	123	36,04
187114035HT	35 x 1 1/4"	55	46	28	180	47,64
187112042HT	42 x 1 1/2"	59	55	28	236	69,24
187200054HT	54 x 2"	71	65	35	362	97,27

B 10 16

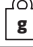



## 190 HT

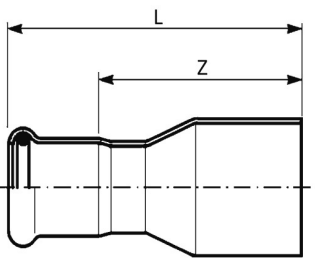
### MANICOTTO MISTO FILETTO F

- FEMALE ADAPTER
- ÜBERGANGSSTÜCK MIT IG
- RACCORD AVEC FILETAGE FEMELLE
- UNIÓN HEMBRA

**MATERIAL:** AISI 316L - 1.4404  
**O-RING:** FKM verde - green - Grün - vert - verde  
**TYPE:** esente silicone - silicon free  
 Siliconfrei - sans silicone  
 libre de silicona  
**THREAD:** EN 10226-1 (ex ISO 7/1)

CODE	De x Rp mm x inch	L mm	Z mm	Y mm			€
190102015HT	15 x 1/2"	38	27	2	64	1	21,96
190102018HT	18 x 1/2"	38	27	2	89	1	23,18
190304022HT	22 x 3/4"	40	32	2	82	1	28,87
190304028HT	28 x 3/4"	42	38	2	130	1	32,96
190100028HT	28 x 1"	45	41	2	158	1	45,14
190114035HT	35 x 1 1/4"	52	46	2	170	1	49,24
190112042HT	42 x 1 1/2"	56	55	2	243	1	76,79
190200054HT	54 x 2"	65	65	2	314	1	114,33

B 10 16





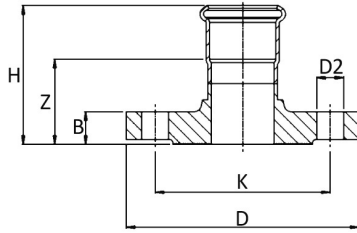
## 191 HT

### RIDUZIONE MF

- REDUCER
- REDUZIERSTÜCK
- REDUCTION
- REDUCCIÓN MH

**MATERIAL:** AISI 316L - 1.4404  
**O-RING:** FKM verde - green - Grün - vert - verde  
**TYPE:** esente silicone - silicon free  
 Siliconfrei - sans silicone  
 libre de silicona

CODE	De mm	L mm	Z mm			€
191018015HT	18 x 15	57	37	35	1	9,37
191022018HT	22 x 18	60	60	47	1	10,59
191028015HT	28 x 15	56,5	76,5	50	1	13,31
191028022HT	28 x 22	65	44	66	1	12,36
191035028HT	35 x 28	71	48	98	1	19,16
191042035HT	42 x 35	81	55	138	1	26,83
191054042HT	54 x 42	97,5	67,5	210	1	34,68



## 193/000 HT

## MANICOTTO FLANGIATO

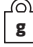

- ADAPTOR FLANGE
- ÜBERGANGSFLANSCH
- BRIDE DE RACCORDEMENT
- BRIDA ADAPTADOR

**MATERIAL:** AISI 316L – 1.4404

**O-RING:** FKM verde - green - Grün - vert - verde

**TYPE:** esente silicone - silicon free  
Siliconfrei - sans silicone  
libre de silica

**PN 16**

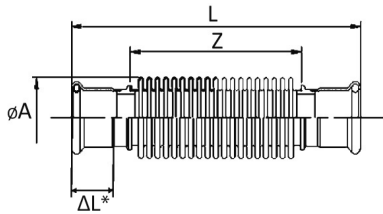
CODE	De mm	DN flg	H mm	Z mm	B mm	D mm	D2 mm	Holes Nr.	K mm	 g		€
193015000HT	15	15	55	35	14	95	14	4	65	660	1	89,67
193018000HT	18	15	55,5	35,5	14	95	14	4	65	660	1	92,18
193022000HT	22	20	58,5	37,5	16	105	14	4	75	945	1	107,20
193028000HT	28	25	61,5	38,5	16	115	14	4	85	1140	1	131,08
193035000HT	35	32	65,5	39,5	16	140	18	4	100	1640	1	184,98
193042000HT	42	40	69	39	16	150	18	4	110	1800	1	217,06
193054000HT	54	50	78	42	18	165	18	4	125	2450	1	267,65

## 199 HT

### COMPENSATORE DI DILATAZIONE

- EXPANSION COMPENSATOR
- WELLENKOMPENSATOR
- COMPENSATEUR D'EXPANSION
- DILATADOR

**MATERIAL:** AISI 316L - 1.4404  
**O-RING:** FKM verde - green - Grün - vert - verde  
**TYPE:** esente silicone - silicon free  
 Siliconfrei - sans silicone  
 libre de silicona



CODE	De mm	L mm	Cycles*	ΔL** mm	Z mm	A mm	g	kg	€
199015000HT	15	139	800	16	71	22	80	1	177,77
199018000HT	18	143	800	18	74	27	108	1	195,54
199022000HT	22	139	800	20	68	34	130	1	217,76
199028000HT	28	150	800	22	73	41	155	1	280,02
199035000HT	35	177	800	26	90	51	251	1	346,62
199042000HT	42	202	800	32	107	61	440	1	413,31
199054000HT	54	221	800	36	113	71	550	1	511,07

La corsa massima di lavoro non deve superare la corsa nominale sotto indicata / The maximum axial stroke must not exceed the nominal value below indicated  
 La course axiale maximum ne doit pas dépasser la course nominale indiquée ci-dessous / Der maximale Axialhub darf den unten angegebenen Nennwert nicht überschreiten / El rango máximo de trabajo no debe exceder el rango nominal abajo indicado

Code	DN	Cycles* MAX	ΔL** (mm)	Temperature °C									
				20°	40°	60°	80°	100°	120°	140°	160°	180°	200°
199 / 15	15	800	16	16,0	14,7	13,6	12,6	11,8	11,4	10,9	10,6	10,2	9,9
199 / 18	18	800	18	18,0	16,6	15,3	14,2	13,3	12,8	12,3	11,9	11,5	11,2
199 / 22	22	800	20	20,0	18,4	17,0	15,8	14,8	14,2	13,7	13,2	12,8	12,4
199 / 28	28	800	22	22,0	20,2	18,7	17,4	16,3	15,6	15,0	14,5	14,1	13,6
199 / 35	35	800	26	26,0	23,9	22,1	20,5	19,2	18,5	17,8	17,2	16,6	16,1
199 / 42	42	800	32	32,0	29,4	27,2	25,3	23,7	22,7	21,9	21,1	20,5	19,8
199 / 54	54	800	36	36,0	33,1	30,6	28,4	26,6	25,6	24,6	23,8	23,0	22,3

(\* ) Numero di cicli di lavoro alla massima compressione - Work cycles number at maximum compression - Anzahl der Zyklen bei einer maximaler Kompression - Nombre de cycles de travail à compression maximale - Número de ciclos de trabajo a máxima compresión

(\*\* ) Corsa assiale in compressione - Compression axial stroke - Axialhub in Kompression - Course axiale en compression - Carrera axial en compresión

CS = corsa assiale di servizio / services axial stroke / course axiale de service / Leistungen Axialhub / rango axial de servicio (mm)

CA Max = corsa assiale massima / maximum axial stroke / course axiale maximum / maximaler axialer Hub / rango axial máximo (mm)

CS/CA %	100	90	80	70	60	50	40	30
Cicli (cycles)	800	1000	1700	2900	5500	12000	35000	160000
Cicli (cycles)	500	625	1050	1800	3400	7500	21800	100000

La pressione massima non deve superare la pressione nominale sotto indicata / The maximum pressure must not exceed the nominal pressure below indicated  
 La pression maximum ne doit pas dépasser la pression nominale indiquée ci-dessous / Der maximale Druck darf den unten angegebenen Nennndruck nicht überschreiten / La presión máxima no debe exceder la presión nominal abajo indicada

°C	20°	40°	60°	80°	100°	120°	140°	160°	180°	200°
PN (bar)	16,0	14,5	13,5	12,5	12,0	11,5	11,0	10,5	10,0	9,5



**RESPONSABILE VENDITE ITALIA**

**Massimiliano GABBI**  
 Tel. 0376 960206  
 Fax 0376 96422  
 Cell. 335 7663876  
 massimiliano.gabbi@racmet.com

**FUNZIONARI DIRETTI RM**

**MI-BG-BS-LC-CO-SO-LO-MB-CR-PV**

**Carlo PUGNAGHI** - Funzionario Vendite  
 Tel. 0376 96001 - Fax 0376 96422  
 Cell. 335 7364515  
 carlo.pugnaghi@racmet.com

**TRENTINO ALTO ADIGE - VENETO  
 FRIULI VENEZIA GIULIA - MANTOVA**

**Paolo MEGARESE** - Funzionario Vendite  
 Tel. 0376 96001 - Fax 0376 96422  
 Cell. 345 5669878  
 paolo.megarese@racmet.com

**VENETO**

**MI-BG-BS-LC-CO-SO-LO-MB-CR-VA**

**Matteo VISSER** - Funzionario Vendite  
 Tel. 0376 96001 - Fax 0376 96422  
 Cell. 335 6907418  
 matteo.visser@racmet.com

**EMILIA ROMAGNA - MARCHE (PU - AN)**

**Daniele BONACINI** - Funzionario Vendite  
 Tel. 0376 96001 - Fax 0376 96422  
 Cell. 344 1174021  
 daniele.bonacini@racmet.com

**TOSCANA**

**Alessio PAOLESCHI** - Funzionario Vendite  
 Tel. 0376 96001 - Fax 0376 96422  
 Cell. 335 5251961  
 alessio.paoleschi@racmet.com

**LIGURIA - PIEMONTE - VALLE D'AOSTA**

**Energy Team di Emerigo Francesco**  
 Via Verdi, 20/D  
 18100 Imperia (IM)  
 Tel. 0183 279239 - Fax 0183 653445  
 info@energyteamliguria.it

**Francesco EMERIGO**

Cell. 335 5729143  
 emerigo@energyteamliguria.it

**Andrea SPEDICATI**

Cell. 347 6039291  
 spedicati.a@gmail.com

**LAZIO**

**RTL snc di Maramao e C.**

Via Morolense, 27  
 03013 Ferentino (FR)  
 Tel. 0775 392043  
 info@rtletis.it

**CALABRIA**

**Agenzia Logozzo Fausto**

Via Napoli, 33 - 89042  
 Gioiosa Ionica (RC)  
 Cell. 393 9761850  
 info@agenzialogozzo.com



**CAMPANIA**

**Corrado Rappresentanze sas**  
 Via D. Fontana, 184 - 80131 Napoli (NA)  
 Tel. 081 5463752 - Fax 081 5464837

**Salvatore CORRADO**

Cell. 335 6656224  
 corradosas@fastwebnet.it

**ABRUZZO - MOLISE - UMBRIA  
 MARCHE (AP - FM - MC)**

**SCR sas di Simoncini O. & C.**  
 Via G. Leopardi 26 - 64015 Nereto (TE)  
 Tel. 0861 851807 - Fax 0861 1856461

**Otello SIMONCINI**

Cell. 348 3859388  
 agenziasimoncini@gmail.com

**PUGLIA - BASILICATA**

**F.A.R.P. srl**  
 Viale Vittorio Emanuele II, 26  
 70010 Cellamare (BA)  
 Tel. 080 4657523 - Fax 080 4657498  
 agidue.alloggio@gmail.com

**SICILIA OCCIDENTALE PA - TP - AG - CL**

**Spitaleri Rappresentanze di Spitaleri  
 Gaetano & C. snc**  
 Via degli Ioni, 7 - 91100 Trapani (TP)  
 Tel. 0923 567361 - Fax 0923 553588

**Gaetano SPITALERI**

Cell. 335 5389203  
 info@spitalerirappresentanze.it

**SICILIA ORIENTALE ME - CT - SR - RG - EN**

**Matteo ARDIZZONE**  
 Via Salvatore Quasimodo, 8  
 95030 S. Agata Li Battiati (CT)  
 Tel. 095 213911 - Fax 095 213911  
 Cell. 337 888806  
 ardizzone@videobank.it

**Nello Fabrizio SCIMONE**

Cell. 340 8911730  
 nf.scimone@gmail.com

**SARDEGNA**

**Marco SECCI**  
 Via Torricelli, 9 - 09047 Selargius (CA)  
 Tel. 070 3320991 - Fax 1782746902  
 Cell. 348 6027354  
 agenzia.mgr@gmail.com

**TECHNICAL & SALES CONSULTANT**

**Matteo AVANZI**

Tel. 0376 96001 - Fax 0376 96422  
 Cell. 342 8068177  
 tecnico@racmet.com



**SPAIN - PORTUGAL**

**Paolo IMPERIALE**

Tel. +39 0376 960259  
 Mob. +39 344 0958857  
 paolo.imperiale@racmet.com

**FRANCE**

**Frédéric DEVAUX**

*Responsable des ventes France*  
 Tel. +33 4 78 67 54 46  
 Mob. +33 698565339  
 frederic.devaux@racmet.com

**GERMANY - AUSTRIA  
 SWITZERLAND - LUXEMBOURG**

**Francesco GUANZINI**

Tel. +39 0376 960285  
 Mob. +39 335 7371662  
 francesco.guanzini@racmet.com



**MARINE DIVISION**

**Alessio PAOLESCHI**  
 SALES MANAGER MARINE DIVISION  
 Cell. +39 335 5251961  
 alessio.paoleschi@racmet.com



**RACORDERIE METALLICHE**

**RACORDERIE METALLICHE S.p.A.**

Head Office and Manufacturing Plant:

Strada Sabbionetana, 59

46010 Campitello di Marcaria (MN) ITALY

Tel. +39 0376 96001

Fax. +39 0376 96422

[info@racmet.com](mailto:info@racmet.com)

[raccorderiemetalliche.com](http://raccorderiemetalliche.com)